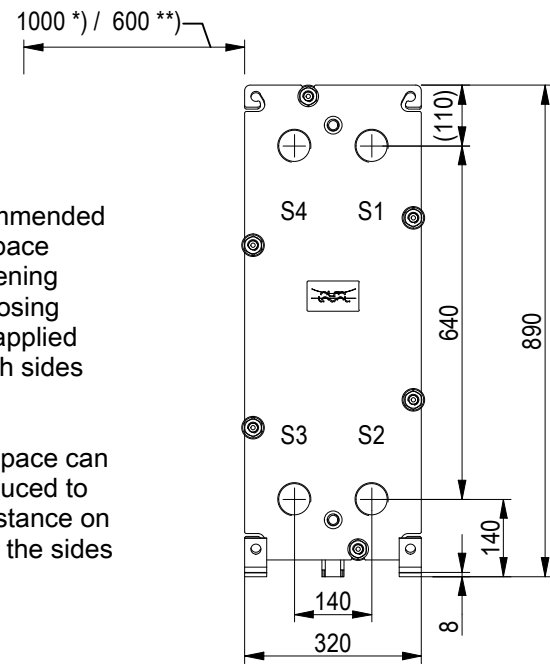


FRAME PLATE

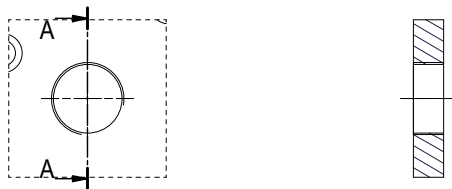


*) Recommended free space for opening and closing to be applied on both sides

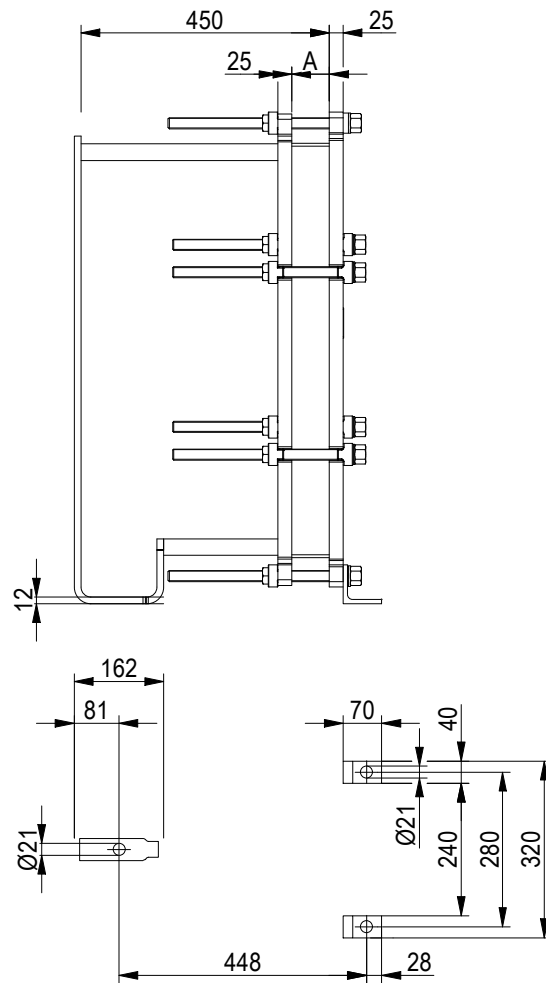
**) Free space can be reduced to this distance on one of the sides

ISO 228 - G 2
S1, S2, S3, S4

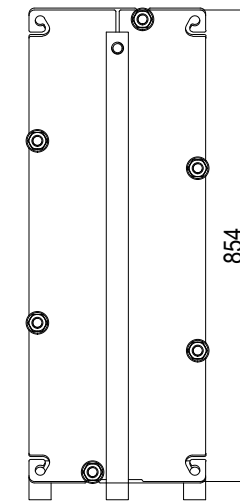
A-A:



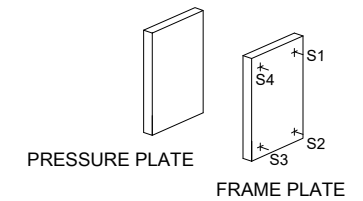
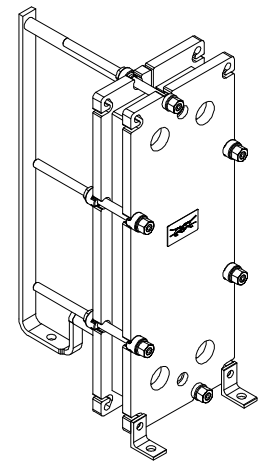
Space between pressure plate and supporting column should be kept free from fixed installations!



PRESSURE PLATE (MOVABLE)



All dimensions in millimeters (mm)



TIGHTENING BOLTS
4 x M20, L = 330 mm
2 x M20, L = 330 mm

A 105 mm +1%/-1%
APPROX. OUTER DIMENSIONS
LENGTH 640 mm
WIDTH 330 mm
HEIGHT 880 mm
APPROX. WEIGHTS
NET WEIGHT, EMPTY 142 kg
WEIGHT FULL OF WATER 154 kg
PLATE MATERIAL ALLOY 316
PLATE THICKNESS 0.5 mm
GASKET NBRP ClipGrip™

NO. OF UNITS 1

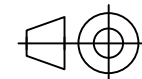


www.alfalaval.com

DRAWING
GASKETED PLATE HEAT EXCHANGER

T6-PFG

PED Article 4.3



ECOSTAR SRL

Do not use this drawing for foundation bolting or piping layout

DATE 20/06/22
REVISION 0