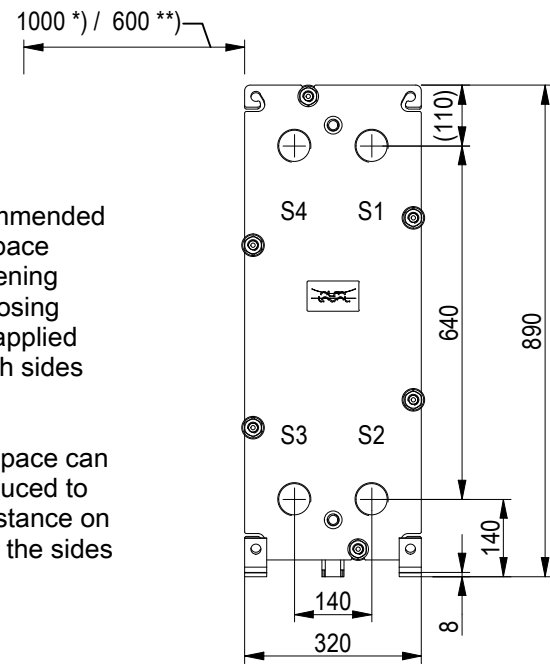


### FRAME PLATE

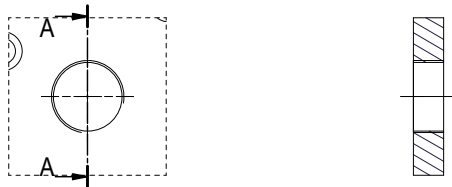


\*) Recommended free space for opening and closing to be applied on both sides

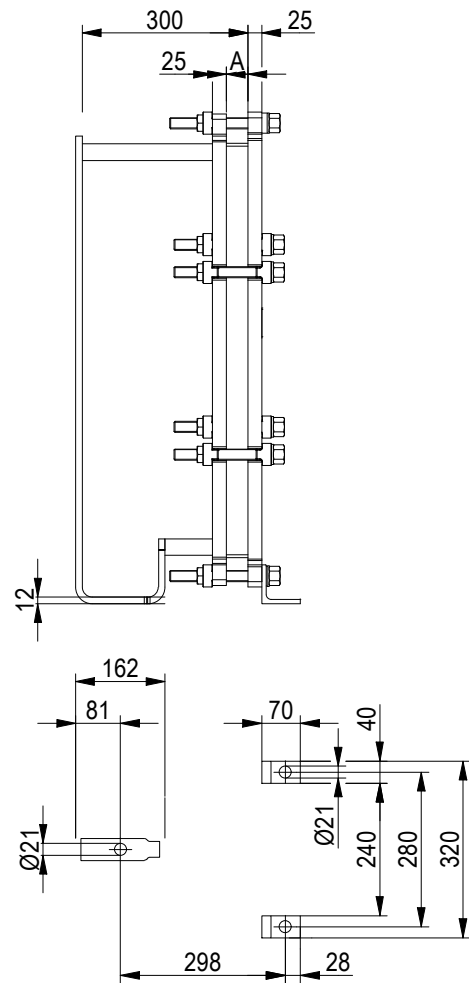
\*\*) Free space can be reduced to this distance on one of the sides

ISO 228 - G 2  
S1, S2, S3, S4

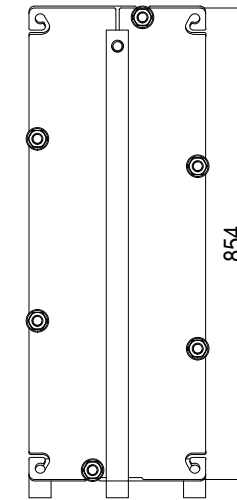
A-A:



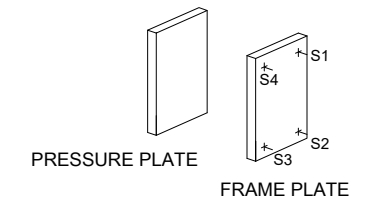
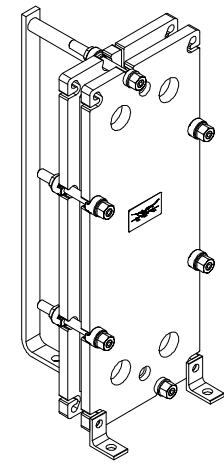
Space between pressure plate and supporting column should be kept free from fixed installations!



### PRESSURE PLATE (MOVABLE)



All dimensions in millimeters (mm)



A	88 mm	+1%/-1%
<b>APPROX. OUTER DIMENSIONS</b>		
LENGTH	490 mm	
WIDTH	330 mm	
HEIGHT	880 mm	
<b>APPROX. WEIGHTS</b>		
NET WEIGHT, EMPTY	136 kg	
WEIGHT FULL OF WATER	146 kg	
PLATE MATERIAL	ALLOY 316	
PLATE THICKNESS	0.5 mm	
GASKET	NBRP ClipGrip™	

NO. OF UNITS 1

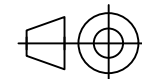


www.alfalaval.com

DRAWING  
GASKETED PLATE HEAT EXCHANGER

# T6-PFG

PED Article 4.3



ECOSTAR SRL

Do not use this drawing for foundation bolting or piping layout

DATE 20/06/22  
REVISION 0